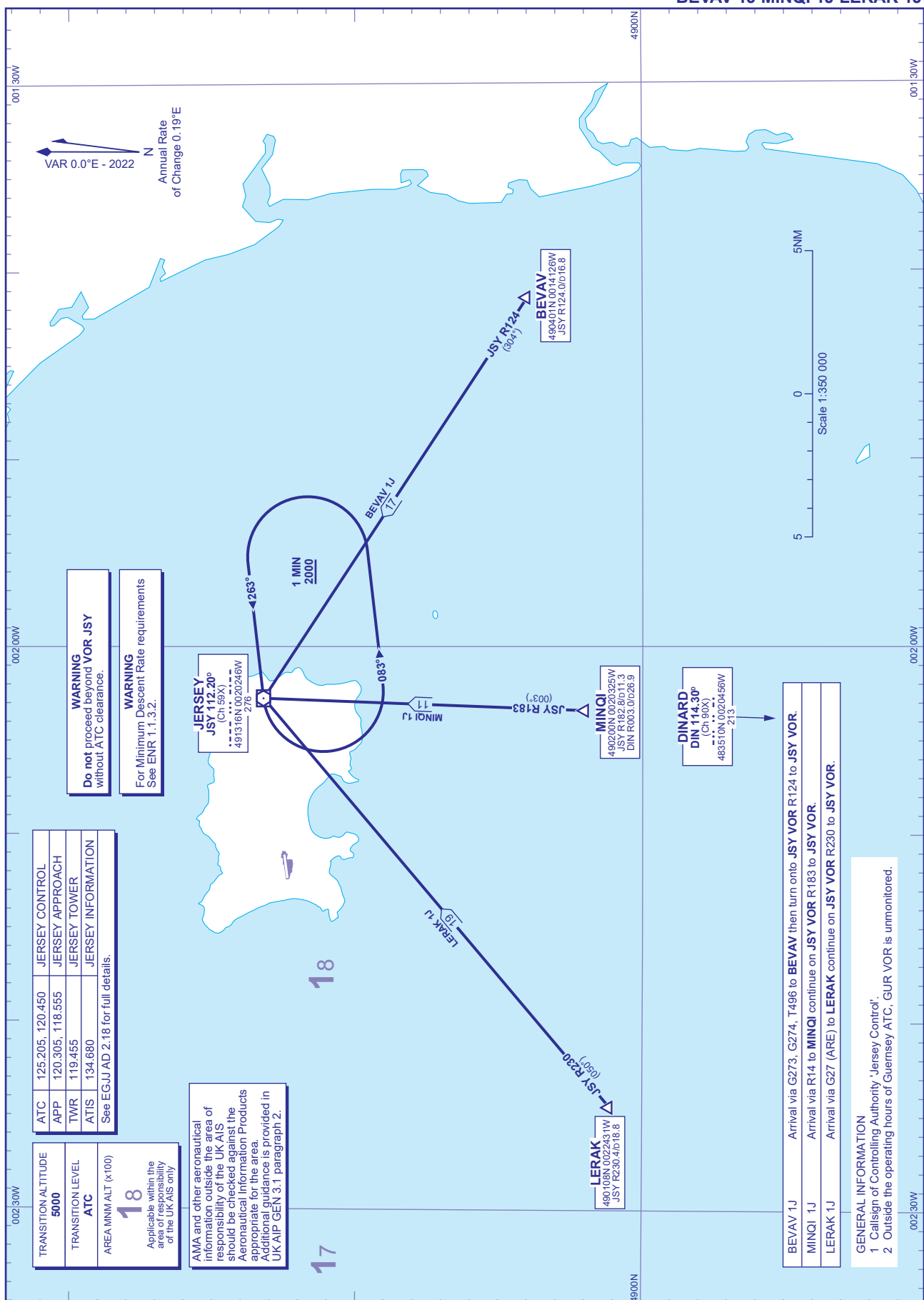


STANDARD ARRIVAL CHART - ICAO

DISTANCES IN NAUTICAL MILES
BEARINGS, TRACKS AND RADIALS ARE MAGNETIC
ALTITUDES AND ELEVATIONS ARE IN FEET

JERSEY
RWY 26
BEVAV 1J MINQI 1J LERAK 1J



TRANSITION ALTITUDE	ATC	125.205, 120.450	JERSEY CONTROL
TRANSITION LEVEL	APP	120.305, 118.555	JERSEY APPROACH
ATC	TWR	119.455	JERSEY TOWER
	ATIS	134.680	JERSEY INFORMATION
See EGJJ AD 2.18 for full details.			

18
AREA MNM ALT (x100)
Applicable within the area of responsibility of the UK AIS only

AMA and other aeronautical information outside the area of responsibility of the UK AIS should be checked against the Aeronautical Information Products appropriate for the area. Additional guidance is provided in UK AIP GEN 3.1 paragraph 2.

BEVAV 1J	Arrival via G273, G274, T486 to BEVAV then turn onto JSY VOR R124 to JSY VOR.
MINQI 1J	Arrival via R14 to MINQI continue on JSY VOR R183 to JSY VOR.
LERAK 1J	Arrival via G27 (ARE) to LERAK continue on JSY VOR R230 to JSY VOR.

GENERAL INFORMATION
1 Call sign of Controlling Authority 'Jersey Control'.
2 Outside the operating hours of Guernsey ATC, GUR VOR is unmonitored.

CHANGE (10/25): AMA UPDATED.